

FF-8000 Floating Fountain

Instruction Manual

Congratulations on your recent purchase of the FF-8000 Floating Fountain.

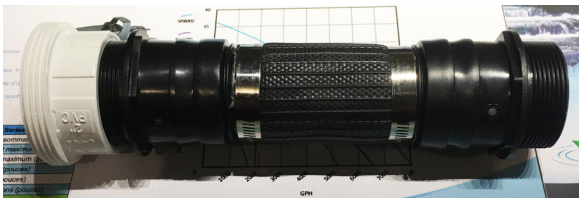
The following page will help you to become familiar with the parts and operation of your Floating Fountain.

In The Box

Your FF-8000 consists of one box that includes the following:

- 1) SP-8000 pump with 100' cord and 2" connection fittings
- 1) float with included nozzle
- 1) connection assembly for float to pump

Optional Lighting- If you have ordered the 4 LED light set with your floating fountain your box will also contain all of the components for the light set including, 4 LED Lights, power supply, controller, cabling, brackets and bolts & nyloc nuts.



connection assembly



pump connection



connection assembly threads on pump



Thread float onto connection assembly